



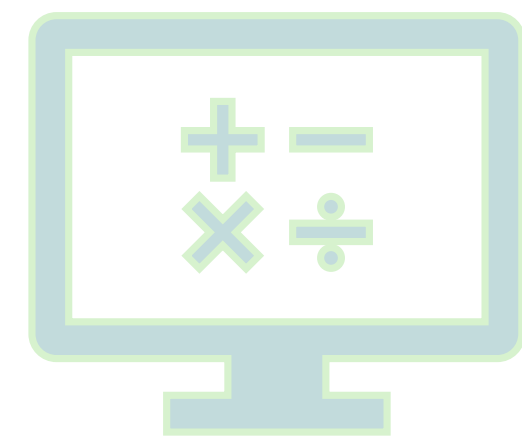
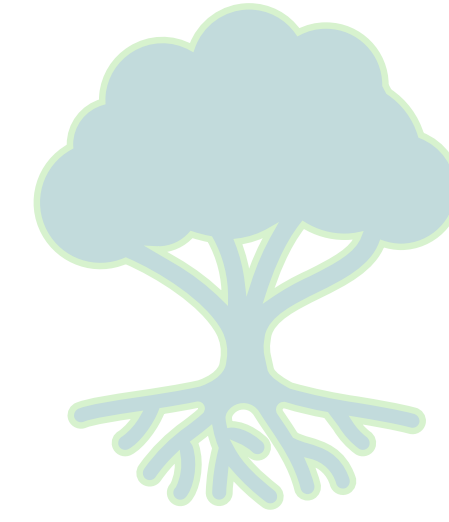
Introducing the UK Network of Agricultural, Biological and Environmental Statistics

This poster was developed on behalf of UK-NABES by
Eleanor D'Arcy, Hayley Carr, Harriet Low, Fiona Underwood

Scan the QR code to join
or see more at
uk-nabes.github.io
nabescontact@gmail.com
linkedin.com/company/uk-nabes



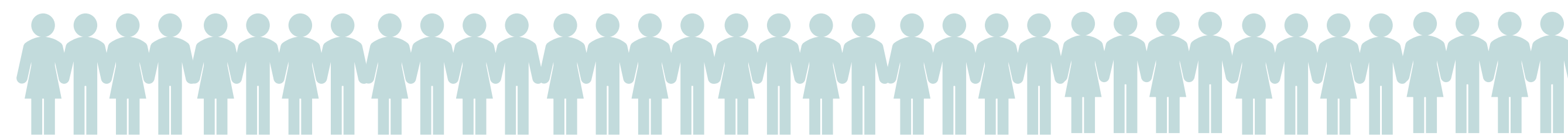
Are you a UK-based quantitative expert
working in applied agricultural, biological
and environmental sciences?



Would you like to engage with a growing
network of quantitative experts?

Are you facing some of these challenges?

- The **only statistician, or in a small** team?
- **Geographically isolated**, with little peer support?
- **Limited access to second opinions** or up-to-date methods?
- **Duplicating effort**, solving problems others already have?
- **Early in your career** with limited support or mentorship?
- Just want to connect with **friendly peers**?



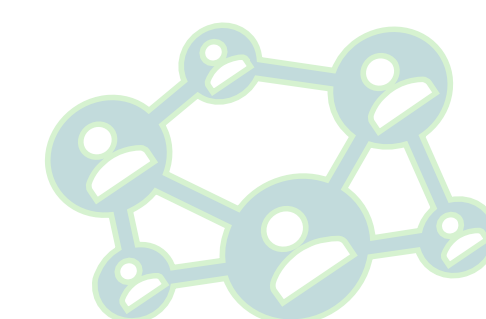
Would these aspects help you in your career?

- **Sharing expertise** with others working on similar problems.
- Developing **shared resources and training materials**.
- Accessing **second opinions, guidance**, and **mentorship**.
- **Building a supportive community** of quantitative experts.

Come join us at UK-NABES!

If you're a statistician, data scientist, modeller or analyst –
across **any career stage** – and are working in the agricultural,
biological or environmental sector, UK-NABES could be for you!

Applied research teams often have just one statistician
or biomathematician. UK-NABES exists to **connect**
quantitative experts across the UK, whether they
are isolated or working in larger teams.



We're creating a **UK-wide community** to share expertise, build
collaborations, and strengthen applied quantitative science
across these sectors.

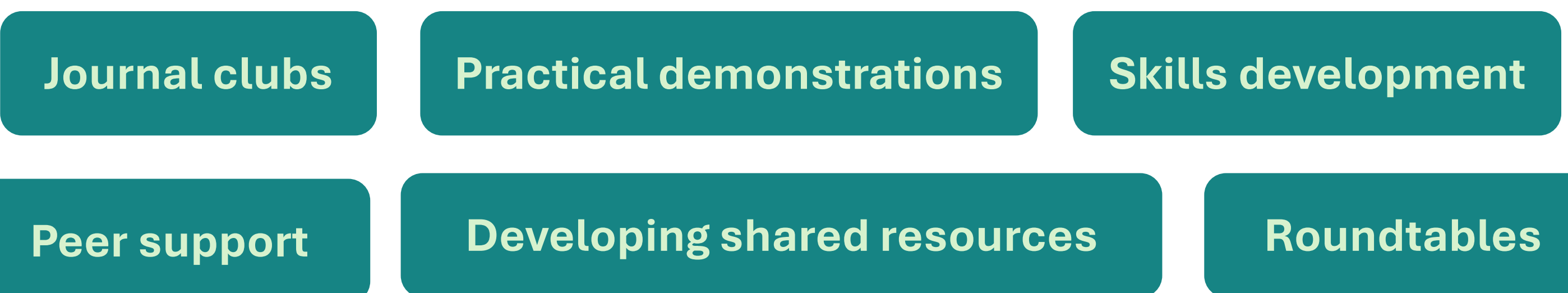
UK-NABES is a **collectively developed network** whose
members shape what we do.

We are a *one stop shop* to connect with other quantitative
experts while developing your quantitative knowledge and
professional skills.

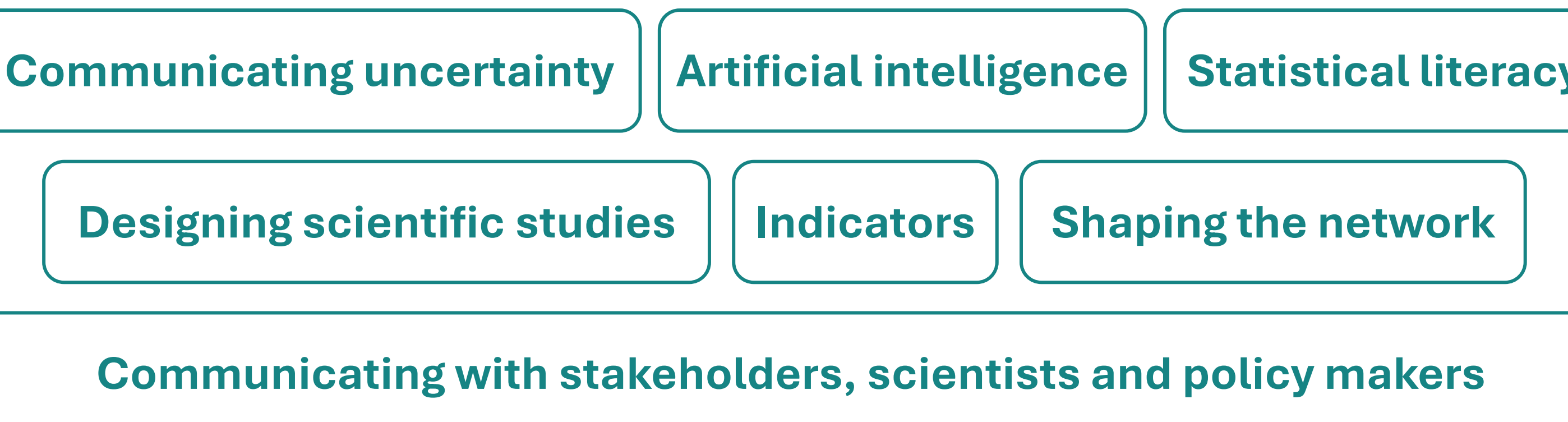
Some things we have done so far include:

Monthly interactive virtual workshops

- These have taken different forms:

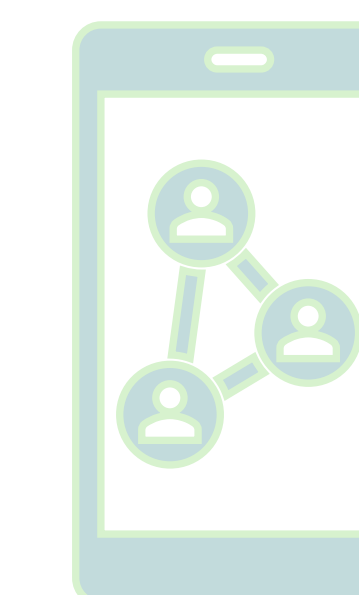


- And covered many different topics:

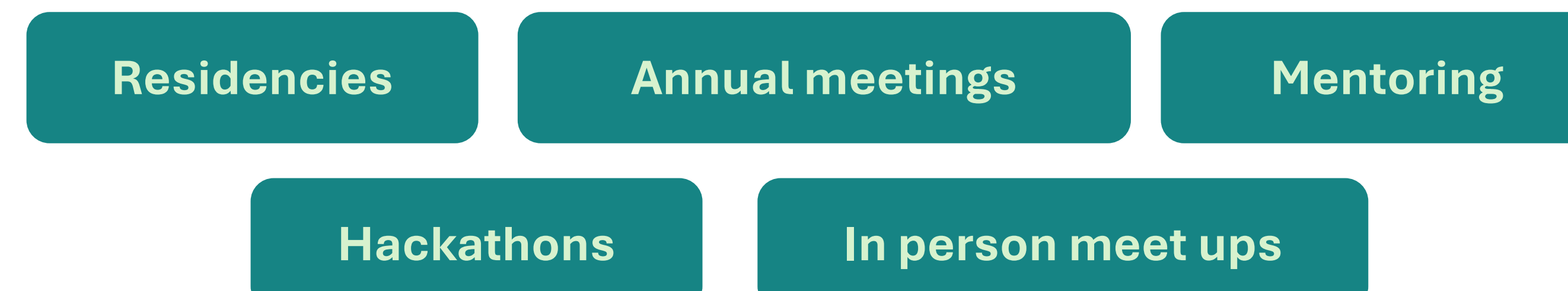


Networking opportunities

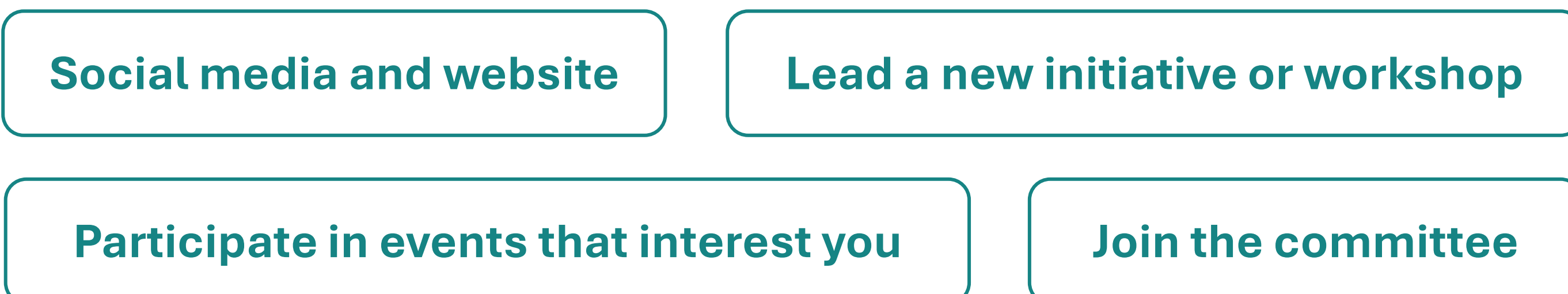
- Workshops include **randomly assigned, structured 1-1s** to meet fellow network members.
- **Monthly informal chats**, without a set topic or structure, to share concerns, challenges, and ideas.
- **Mailing list**, to stay in touch with each other
- **Monthly newsletter**, sharing news and workshop summaries



And we have plans for more....



There's plenty of ways to get involved:



What our members have to say:



Our UK-NABES Committees include



Join us to help shape our community, together.

Come and find us – we are a friendly bunch and would
be happy to chat with you about what we are doing.

People from our network who are at this event: